

# Product Feature

---

- New VCM-II Support Ford & Mazda IDS in One Device.
- New VCM-II Support any version of IDS without Firmware Update.
- New VCM-II will never be Locked in any new version of IDS.
- Ford IDS 95.03 Version in VMWare without Setup.
- Mazda IDS 95.02 Version in VMWare without Setup.

# Computer Requirements

---

- Processor: Core CPU 2GHz+.
- Memory: 4G Bytes or more.
- Hard disk: 40G or more.
- Display: Resolution 1024x768 or higher.
- Network interfaces: LAN 10 / 100M or 802.11b / g.
- Communication Interface: USB2.0 or USB3.0
- Operating System: Windows XP SP3 / Win7 / Win8 / Win8.1.

# Useful Resources from Web

---

- [IDS Software Download](http://www.motorcraftservice.com/vdirs/wds/diagnosticsites/vcmdvd/mcs/idssoftware.asp)  
(<http://www.motorcraftservice.com/vdirs/wds/diagnosticsites/vcmdvd/mcs/idssoftware.asp>)
- [IDS Software Update and Reprogram Files Download](https://www.motorcraftservice.com/vdirs/wds/PCMReprogram/DSFM_PCMReprogram.asp?swproduct=IDS)  
([https://www.motorcraftservice.com/vdirs/wds/PCMReprogram/DSFM\\_PCMReprogram.asp?swproduct=IDS](https://www.motorcraftservice.com/vdirs/wds/PCMReprogram/DSFM_PCMReprogram.asp?swproduct=IDS))

# Use IDS in VMware

---

You can easily use Ford IDS and Mazda IDS in one PC with VMware.

## 0. Setup Video

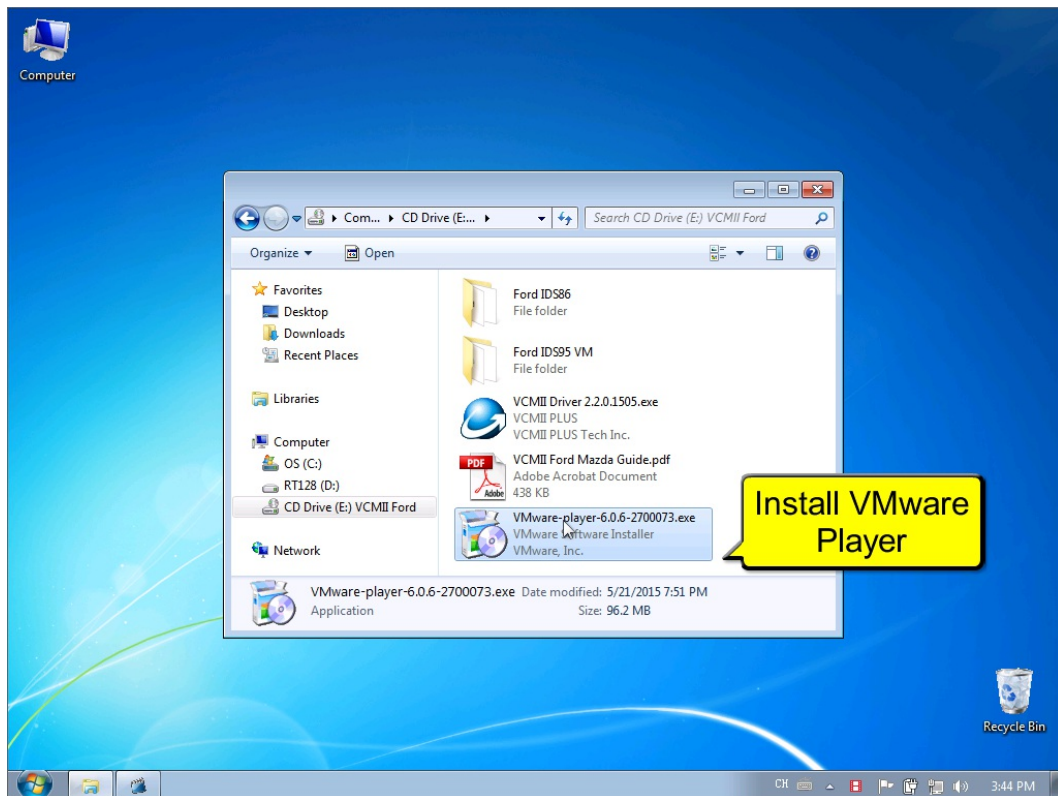
---

Your explorer does not support the HTML5 Video.

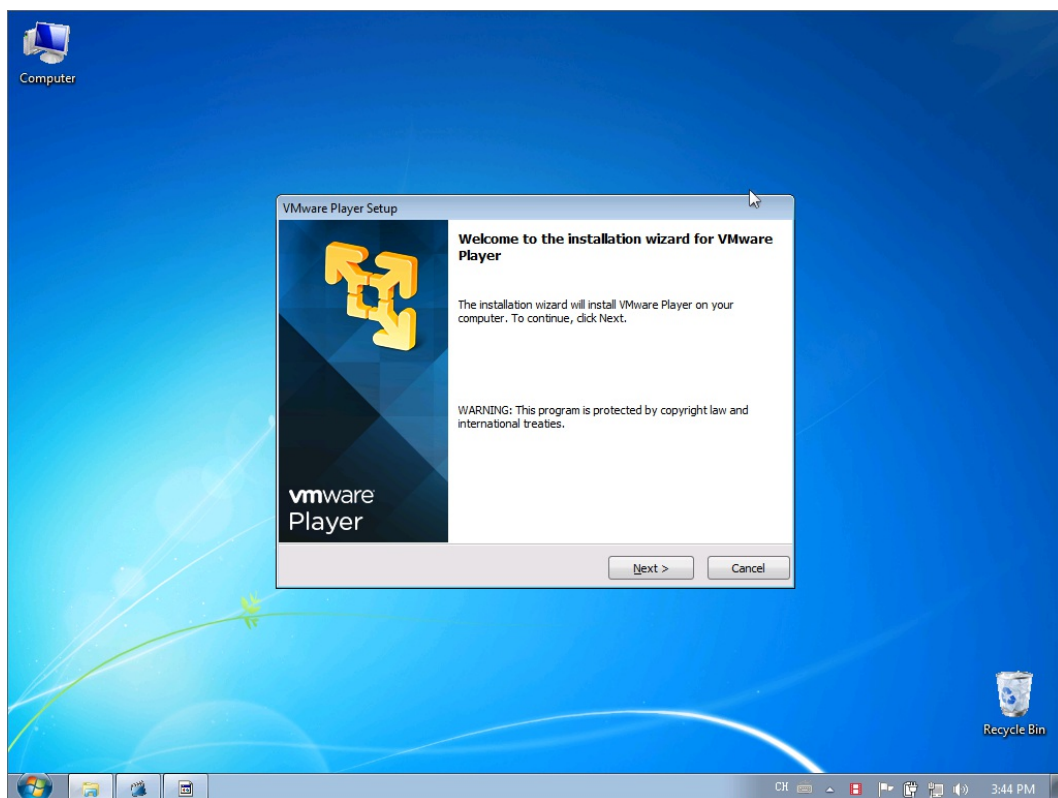
Please Use Chrome / Firefox / IE9+

You can watch the Video with Media Player: (DVD\VCMI Setup\_html\VCMI\_setup.mp4)

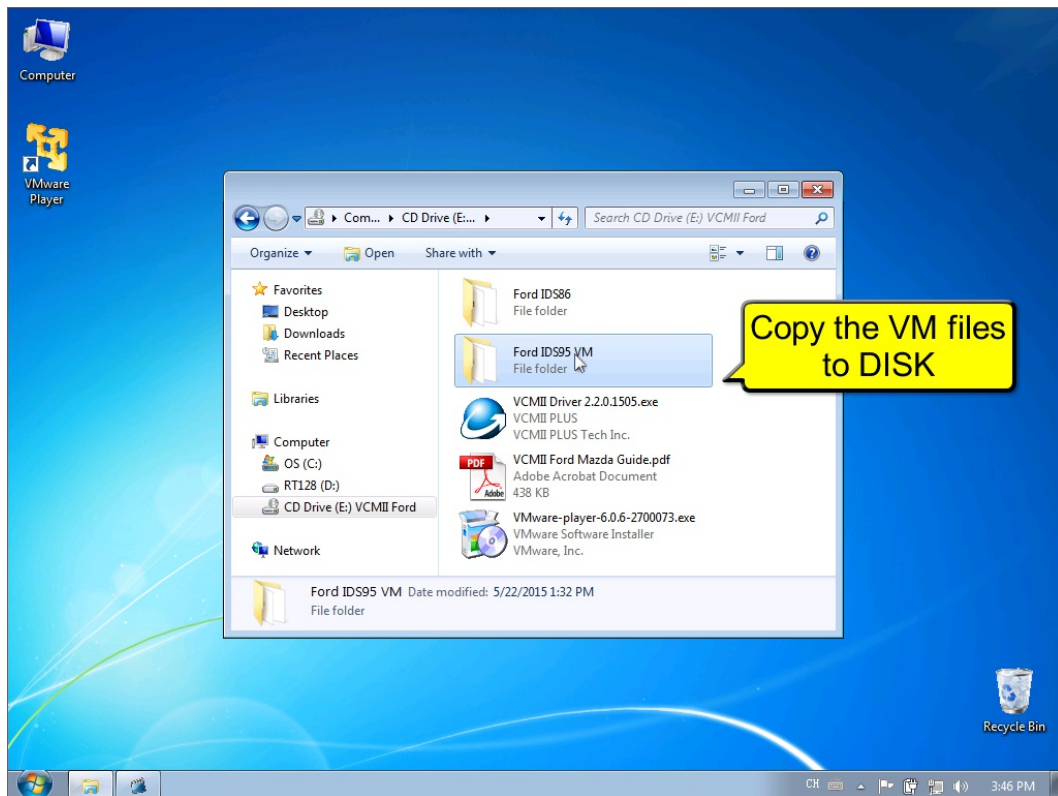
## 1. Open DVD and install VMware-Player-6.0.6.exe



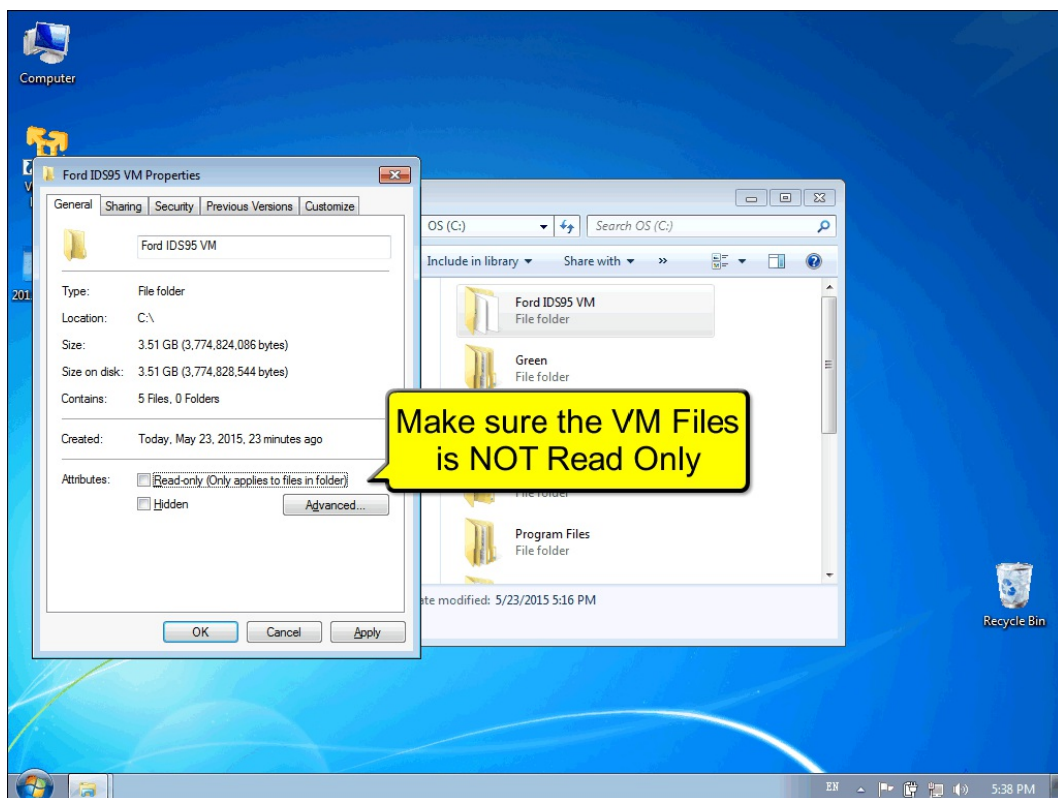
## 2. Installing VMware Player



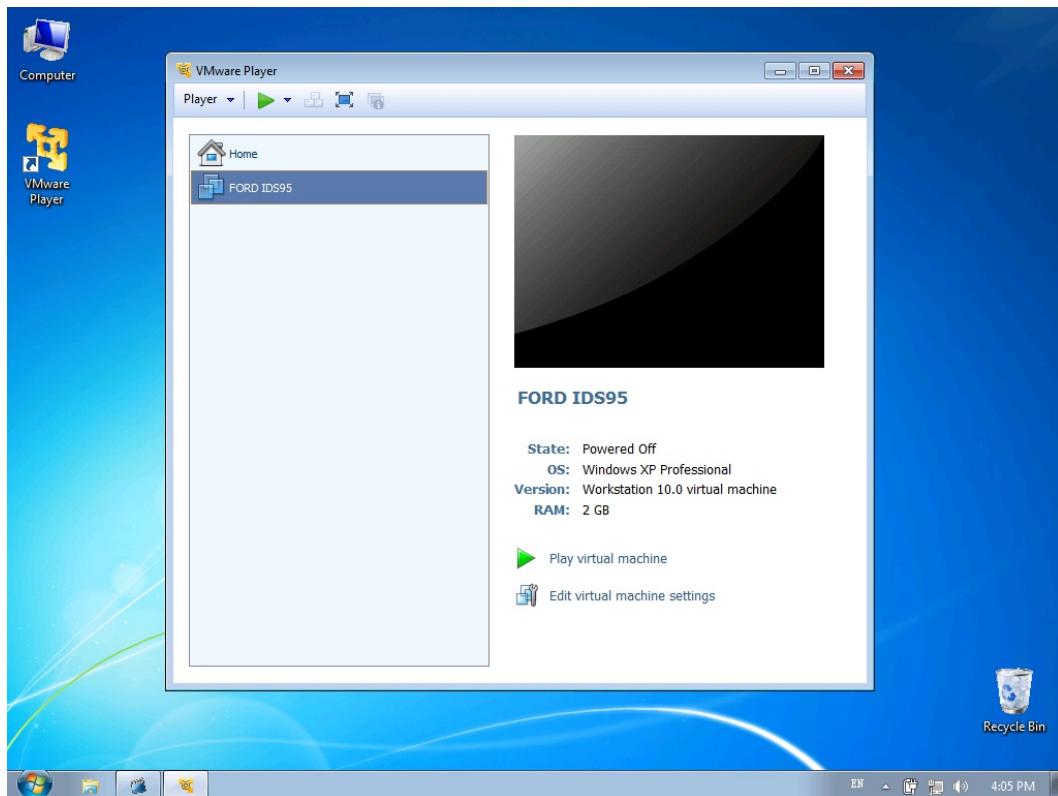
### 3. Copy VM Files to DISK



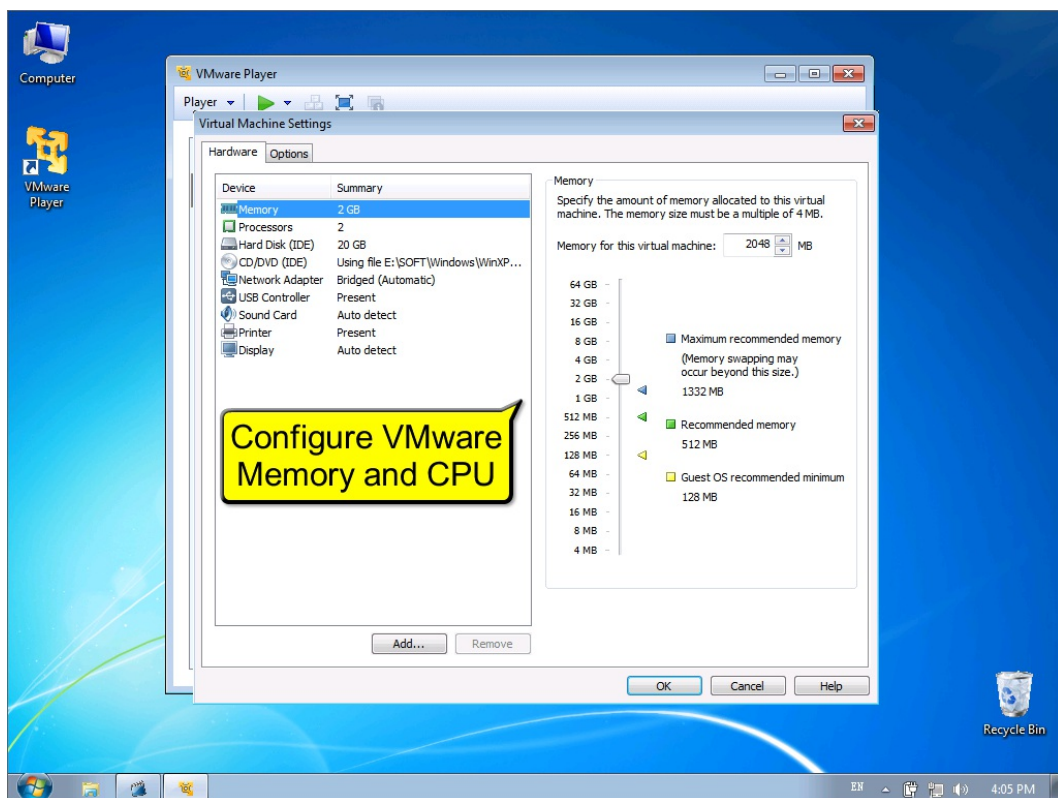
### 3. Make sure the VM Files is NOT Read Only



## 4. Open VMware Player and Open VM.vmx

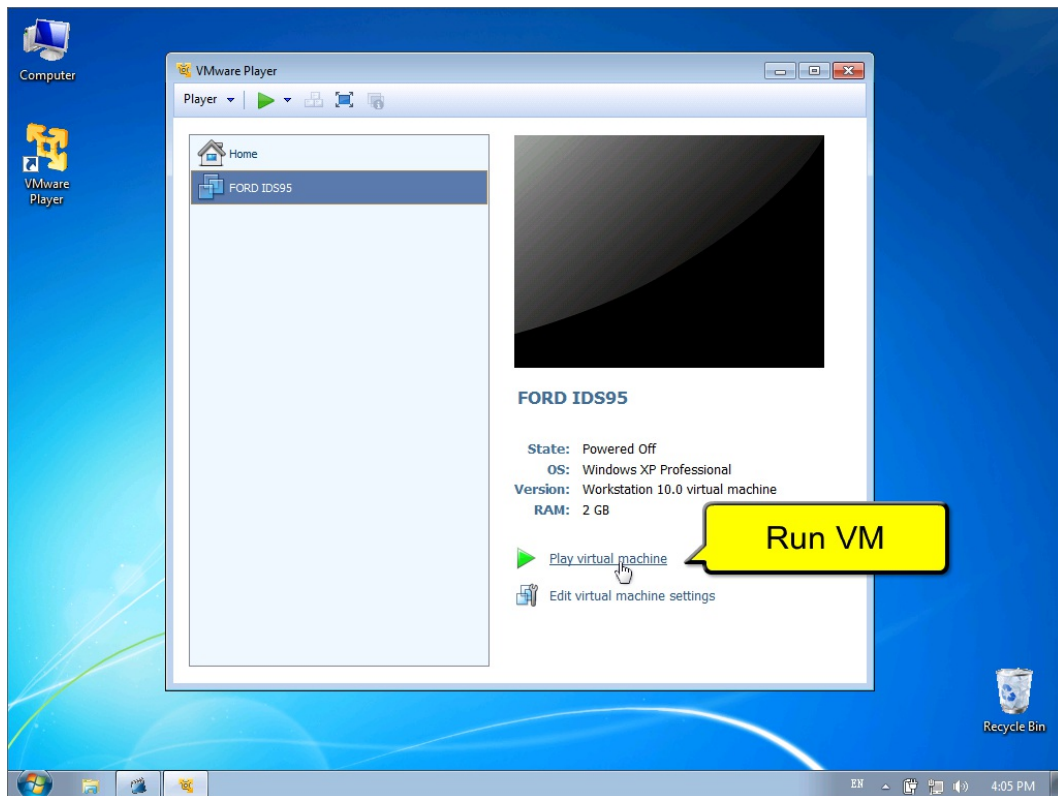


## 5. Configure VM Memory and CPU Performance





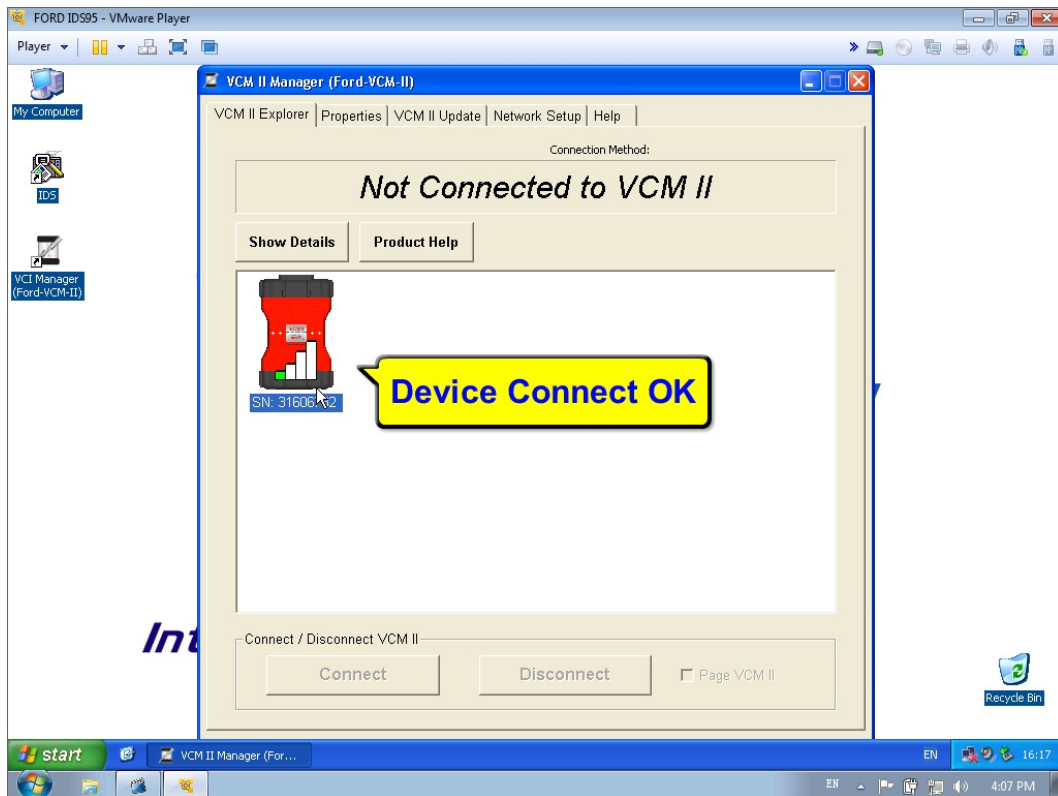
## 6. Run VM



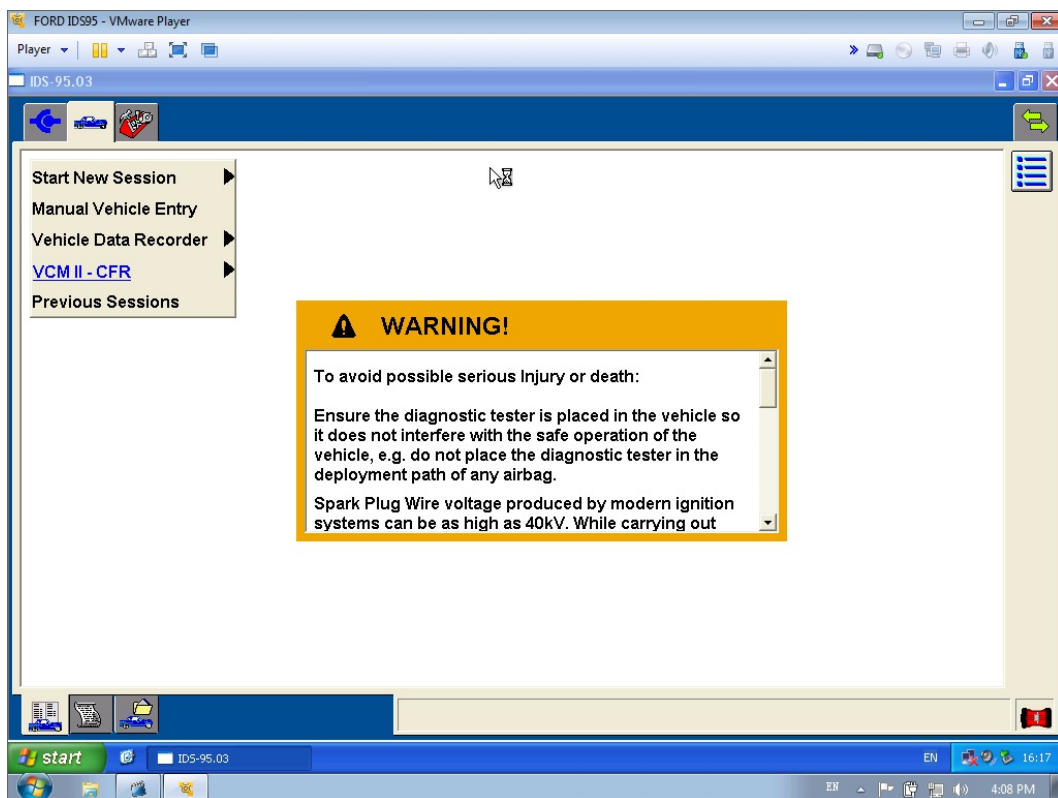
## 7. Connect Device USB to VM



## 8. Open VCI Manager to check device



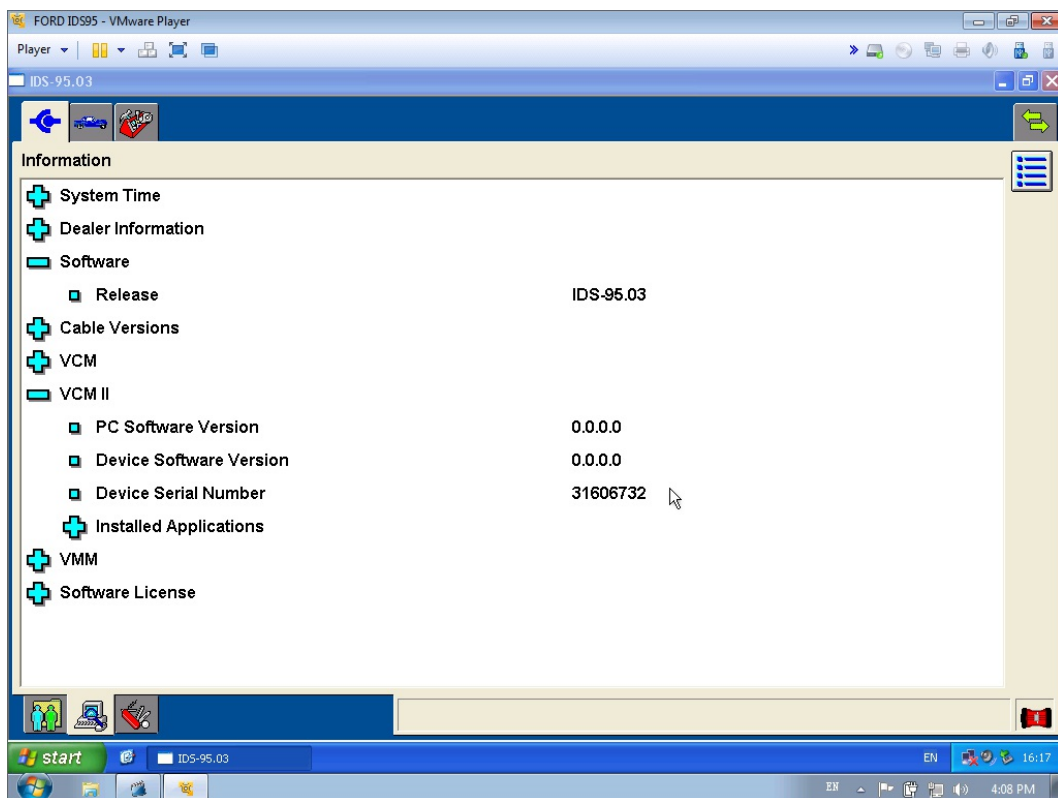
## 9. Open IDS software



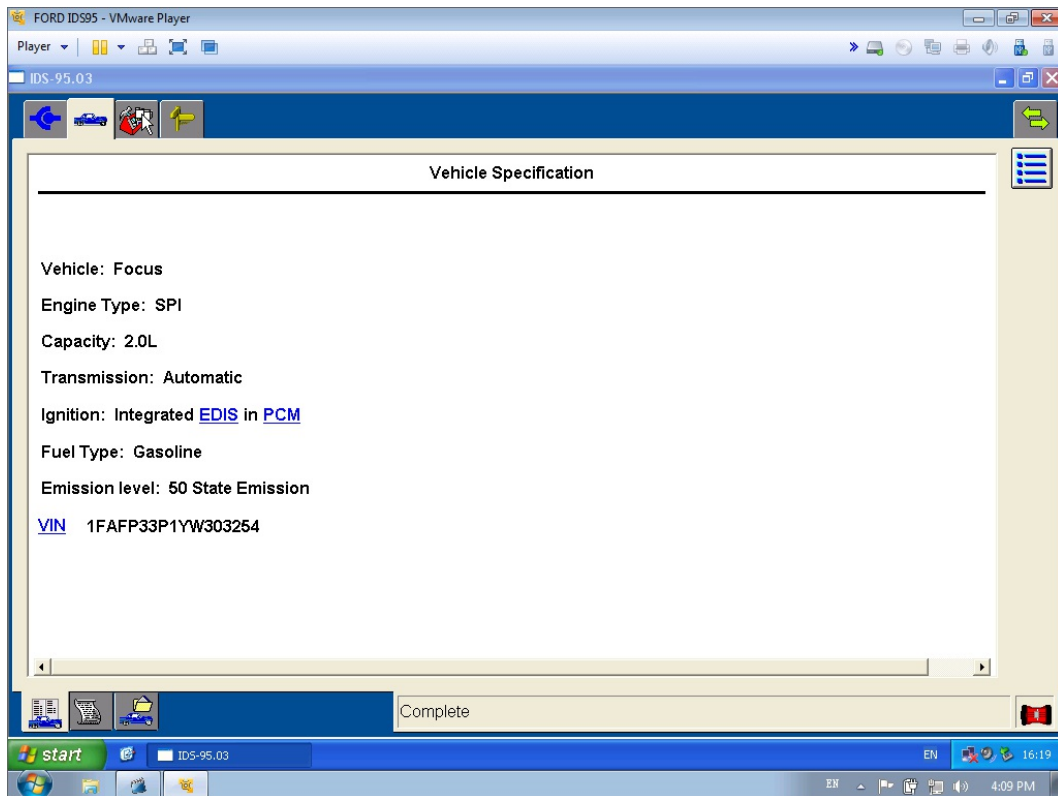
## 10. IDS Device Manager



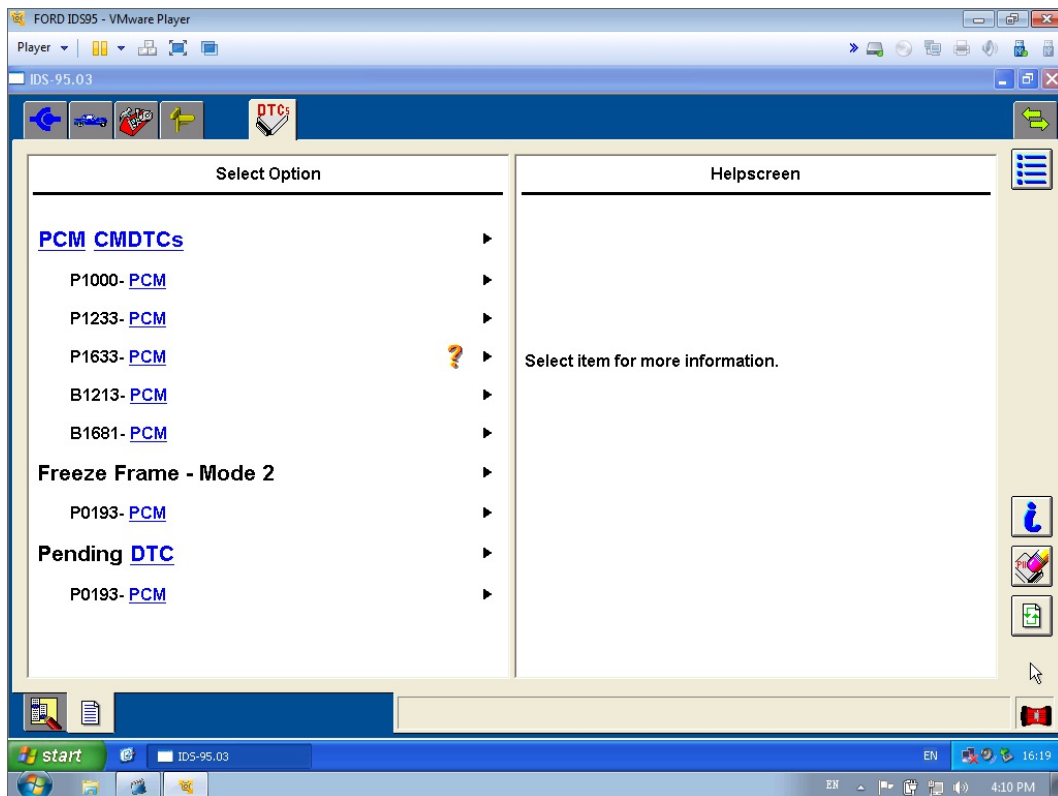
## 11. IDS Software Version



## 12. Diagnostic Vehicle Specification

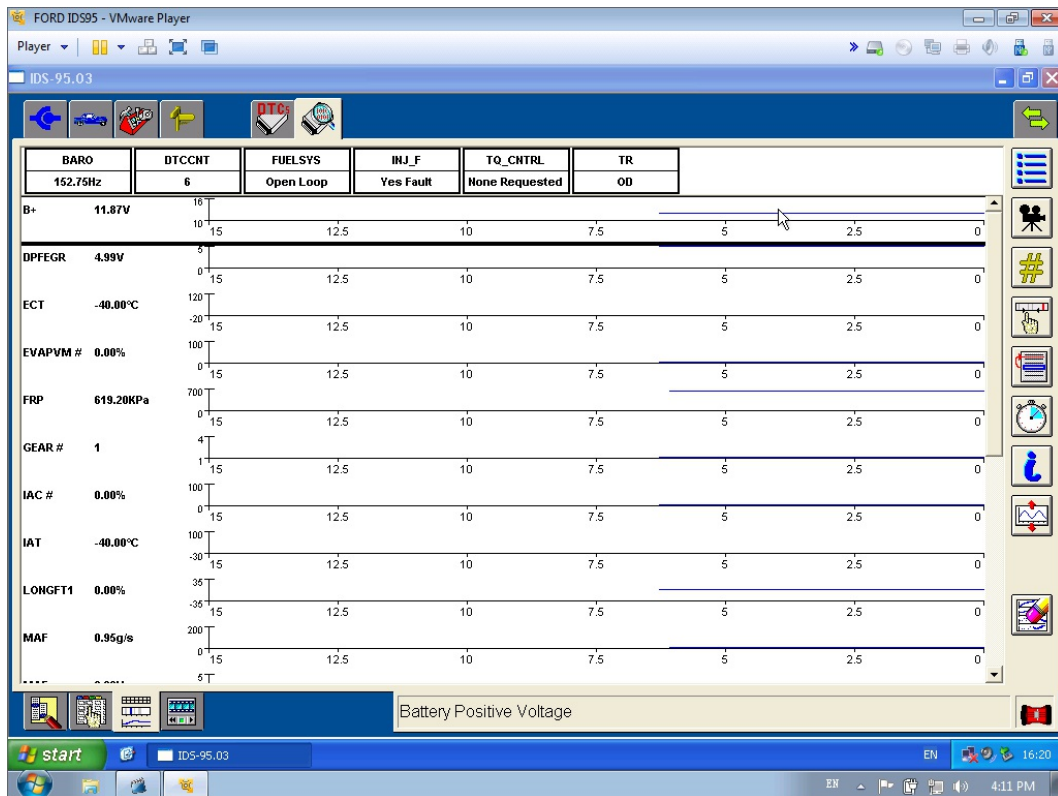


## 13. Diagnostic PCM DTC

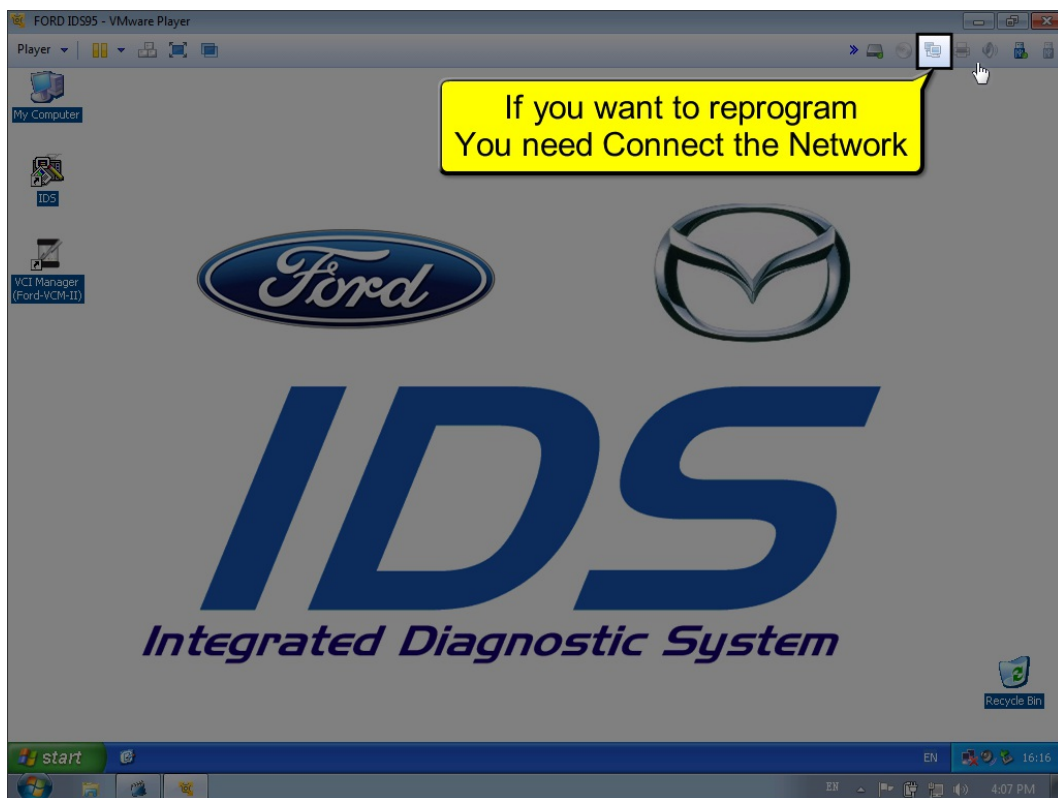




## 14. Diagnostic PCM DataLogger



## 15. Connect to Network for Online ReProgram



# Setup IDS and VCMII in your PC

---

If you need to install the IDS to the physical machine, just 2 steps:

- Install IDS software.
- Install VCMII-Driver-2.2.0.1505.exe from DVD.

*Note: Ford IDS and Mazda IDS can not install in one PC.*